



ALFRA BUSBAR BENDING AND PUNCHING MACHINE – LPV



Made in Germany by ALFRA

Bending busbars up to 120 x 12 mm
Punching busbars Ø 6.6 to 21.5 mm

The machine comprises a main frame made of torsion-free aluminium profile with the mount for the basic bending and punching machine. A length stop makes it easier to set the hole pattern for punching. To make work with longer copper rails easier, the retractable frame with support bracket can be extended to approx. 700 mm. All stops and support brackets are easily and quickly fixed in place by means of clamping levers.

Technical data:

Bending:

Bending Cu max.	120 x 12 mm
Bending angle up to:	over 90°
Smallest leg length:	50 mm
Smallest U-bending:	100 mm
Smallest Z-bending:	72 mm (depending on material thickness)

The specified values are based on Cu rails 120 x 10 mm

Punching:

Punching Cu:	Ø 6.6 - 21.5 mm including oblong holes up to max. L = 21 mm
Material thickness Cu max.:	12 mm
Material width up to:	110 mm centric
Dimensions L x W x H:	615 x 370 x 315 mm
Weight:	44 kg



Prod.-No. 03256 Scope of supply without punches and dies



We recommend our electro-hydraulic pump AHP 03-1 Prod.-No. 03853 as a drive

Accessories

Punches and dies available

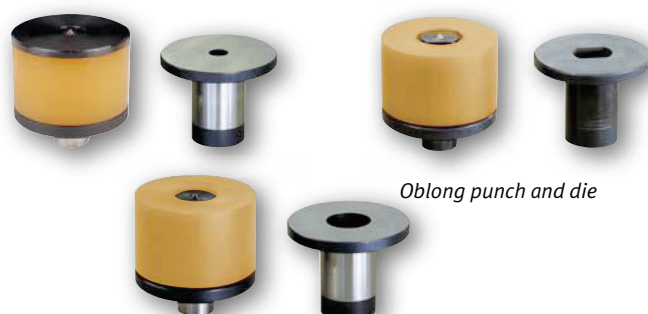
Punch Ø mm	Metric screw connection	Prod.-No.
6.6 x	6.0 up to 5 mm material thickness	03204
9.0 x	8.0 up to 6 mm material thickness	03205
9.5 x	8.0 up to 6 mm material thickness	03206
11.0 x	10.0 up to 12 mm material thickness	03207
11.5 x	10.0 up to 12 mm material thickness	03208
13.5 x	12.0 up to 12 mm material thickness	03209
14.0 x	12.0 up to 12 mm material thickness	03210
17.5 o	16.0 up to 12 mm material thickness	03211
18.0 o	16.0 up to 12 mm material thickness	03212
21.0 o	20.0 up to 12 mm material thickness	03213
21.5 o	20.0 up to 12 mm material thickness	03214

x with neoprene stripper and pressure plate
o with neoprene stripper without pressure plate

Dies -S- max. mat. thickness	Prod.-No.	Dies -L- max. mat. thickness	Prod.-No.
6.6 5	03215	6.6 5	03230
9.0 5	03216	9.0 6	03231
9.5 5	03217	9.5 6	03232
11.0 5	03218	11.0 12	03233
11.5 5	03219	11.5 12	03234
13.5 5	03220	13.5 12	03235
14.0 5	03221	14.0 12	03236
17.5 5	03222	17.5 12	03237
18.0 5	03223	18.0 12	03238
21.0 5	03224	21.0 12	03239
21.5 5	03225	21.5 12	03240

Punches and dies for oblong holes up to max. L = 21 mm

Punches and die set: oblong notes up to max. L = 21 mm		Prod. No.
up to 5 mm material thickness		03226
up to 12 mm material thickness		03241



Oblong punch and die

Round punches and dies

A