



fitted with

work equipment
connected load
power consumption
luminous flux
luminous efficacy
light distribution
light colour
color rendering index (CRI)
system of protection
class of protection
technology
usage
luminaire body
lamp cover
weight (net)
mains supply

design
fastening
dimension
special features

LED

Energy efficiency category A+
without
20-28V; DC
approx. 16 W
approx. 1680 lm
approx. 105 lm/W
direct, wide-angled beam
neutral white, approx. 5000 K
> 80
IP 67
III
switchable
external
aluminium, anodised, aluminium coloured anodised
screen, clear
approx. 0.8 kg
built-in plug
RSFM 4/0,05 P25-1
mounted version
L-angle, clamp
A=540 mm
angle of illumination 90°, through-wired

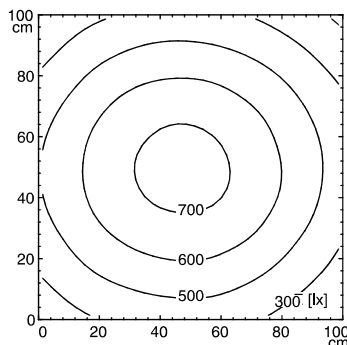


RSFM 4/0,05 P25-1

illuminance

distance: 100 cm

Em: 541 lx
Emax: 732 lx
Emin: 326 lx



luminous intensity

